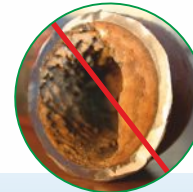




UpFlow

High-performance monospheric resin. Countercurrent regeneration – upflow



Protection of water installations



Backlit LCD screen with menu in English



Energy saving up to 30%

SUPREME SOFT SERIES

Professional water softening systems



www.supremefilters.com

Advantages:

- Warranty up to 10 years!
- High-performance monospheric resin.
- Electronic volume control valve.
- Backlit LCD screen with menu in English.
- Countercurrent regeneration – upflow.
- Proportional collection of brine in the regeneration process (three times less water and salt for regeneration).
- Washings hoses included.
- High quality workmanship.



Protection of expensive household appliances against scale build-up



Protection of sanitary facilities



Elimination of "white" sludges on dishes and cutlery



Smooth skin, soft hair

Description:

Softeners from the **SUPREME SOFT** series are the newest line of products used for water treatment. The highest quality components as well as modern and innovative technological thought classify **SUPREME SOFT** systems much higher than traditional softening systems.

Owing to the application of modern monospheric resin, devices have much better performance parameters compared to the common softeners available on the market.

One of the main advantages is the fact that the **SUPREME SOFT** systems consume a lot less salt and water during regeneration, which largely translates into savings and is beneficial to the environment in which we live.

SUPREME SOFT softening systems are currently the best solution for households, public institutions or companies.

High quality materials used in the production of the system guarantee a long and failure-free operation.

Technical information:

Type	SUPREME SOFT 11	SUPREME SOFT 15	SUPREME SOFT 20	SUPREME SOFT 26	SUPREME SOFT 32
Working pressure min./max.	1,4 bar / 8,3 bar				
Working temperature min./max.	2°C - 48°C				
Electrical connector	230/50 V/Hz				
Maximum power consumption	17 W				
Hydraulic connection inlet/outlet	external thread 3/4" BSP				
Control valve type	541N89				
Control valve injector	8			5	
Pressure vessel dimensions	9X18	9X24	10X24	9X35	10X35

System information:

Type of control	Electronic-volumetric
Raw water mixing	Option
Bed type	High-performance monospheric resin
Regenerating agent type	Tablet salt
Regeneration system	Countercurrent

Performance (at a salinity of 125 g/litre of resin ¹):

Bed volume (dm ³)	11	15	20	26	32
Nominal exchange capacity (m ³ x°f)	56	77	102	133	163
Nominal exchange capacity (m ³ x°d)	32	44	58	75	93
Salt consumption for regeneration (kg) ⁽²⁾	1,4	1,9	2,5	3,3	4
Exchange capacity per 1 kg of salt (m ³ x°f)	41				
Exchange capacity per 1 kg of salt (m ³ x°d)	23				
Maximum recommended operating flow (m ³ /h)	1,1	1,5	2,0	2,6	3,2
Rinse water consumption for regeneration (at 3 bar) (litre) ⁽²⁾	59	80	92	116	141

⁽¹⁾ Approximate sizes and performance depend on the operating conditions and water quality.

⁽²⁾ Maximum consumption of salt / water with proportional salinity (minimum 60%).

Weight and Dimensions:

Width (mm)			345		
Height (mm)	663	803		1084	
Depth (mm)				573	
Depth, including bypass (mm)				658	
Height inlet/outlet (mm)	514	654		933	
Height inlet/outlet, including bypass (mm)	520	660		939	
Weight (kg)	18,5	24,0	28,5	35,5	41,0
Weight, including bypass (kg)	19,0	24,5	29,0	36,0	41,5
Maximum storage capacity of salt (kg)	50	75		125	